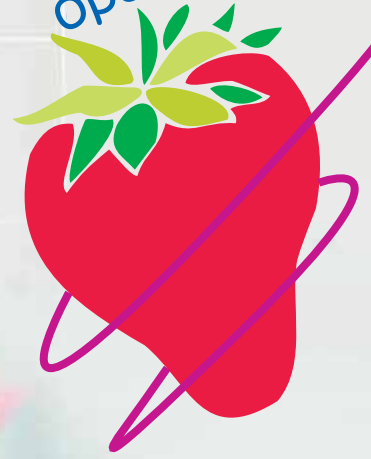


smoothie
operators



S smoothie & lush



SLUSH MACHINE - 12LITER CAPACITY

- Unbreakable & non-poisonous P.C 12liter(3.17gallon) capacity bowls. (Maximum mix capacity is 9liter.)
- Stainless steel body and case for long life.
- Durable metal gear motor for long life and reliability.
- TC & Torque control system.



SSM-180



SSM-280



SSM-420



SSM-560

SLUSH MACHINE - 7.5LITER CAPACITY

- No.1 performance in tropical zone.
- Fastest freezing ability.
- Unbreakable & non-poisonous P.C 7.5liters(1.98gallon) capacity bowls.
- TC & Torque control system.
[Drain cap] [Drip guidance] [Air filter] [Drain box] adopted.



SSM-52

Multipurpose ALL IN ONE

Slush & Soft Ice Cream Machines are combined.
You can enjoy Slush & Yogurt together.



SSM-280



SSI-151TG




ALL IN ONE



SLUSH MACHINE - 12LITER CAPACITY

Model	SSM-180	SSM-280	SSM-420	SSM-560
				
Dimensions	195×487×837(mm)	395×468×897(mm)	598×468×897(mm)	795×502×1,307(mm)
(W x D x H)	7.7×19.2×33.0(inch)	15.6×18.5×35.4(inch)	23.6×18.5×35.4(inch)	31.3×19.8×51.5(inch)
Weight	30Kg (66.2lbs)	51Kg(112.5lbs)	75Kg(165.4lbs)	160Kg(352.8lbs)
Legs	Rubber Packing	Rubber Packing	Rubber Packing	Casters
Power consumption	320W	1,020W	1,350W	2,040W
Gear motor	67W×1EA	67W×2EA	67W×3EA	67W×4EA
Refrigerant	R-134a	R-404a	R-404a	R-404a
Compressor	0.35HP	0.85HP	0.85HP (50Hz spec) 1.30HP (60Hz spec)	0.85HP×2EA
Voltage rate	115V/60Hz			-
	208~230V/60Hz			208~230V/60Hz
	220~240V/50HZ			220~240V/50HZ
Optional accessories	-	Supporting Table	Supporting Table	-

SLUSH MACHINE - 7.5LITER CAPACITY

Model	SSM-52
	
Dimensions	420×380×705(mm)
(W x D x H)	16.6×7.1×27.8(inch)
Weight	38Kg (83.8lbs)
Legs	Adjustable leveler
Power consumption	500W
Gear motor	67×2EA
Refrigerant	R134a
Compressor	0.5HP
Voltage rate	115V/60Hz
	208~230V/60Hz
	220~240V/50HZ

MULTIPURPOSE

Model	ALL IN ONE
	
Dimensions	825×724×1,500(mm)
(W x D x H)	32.5×28.5×59.1(inch)
Weight	190Kg(419lbs)
Slush Part : Same as SSM-280	
Soft Ice Cream Part	
Mix Hopper Capacity	10liter (2.64gallon)
Cylinder Capacity	1.4liter (0.37gallon)
Dasher Motor	0.37KW
Maximum Production	12Kg/h(26.5lbs/h)
First Dispensing Time	6~8min
Consecutive Dispensing	5~6cups(100cc/3.5oz)
Compressor-Cylinder	0.85HP(R404a)
Compressor-Mix Hopper	0.35HP(R134a)
Voltage rate	208~230V/60Hz
	220~240V/50HZ

* The product's design and specification is subject to change without notice.



www.smoothieoperators.co.uk



JONATHAN FLEET
MANAGING DIRECTOR

P: 0845 302 4592
M: 07939 139590
F: 0845 302 4593
E: fleet@smoothieoperators.co.uk

Warwick Enterprise Park
Wellesbourne
Warwick
CV35 9EF